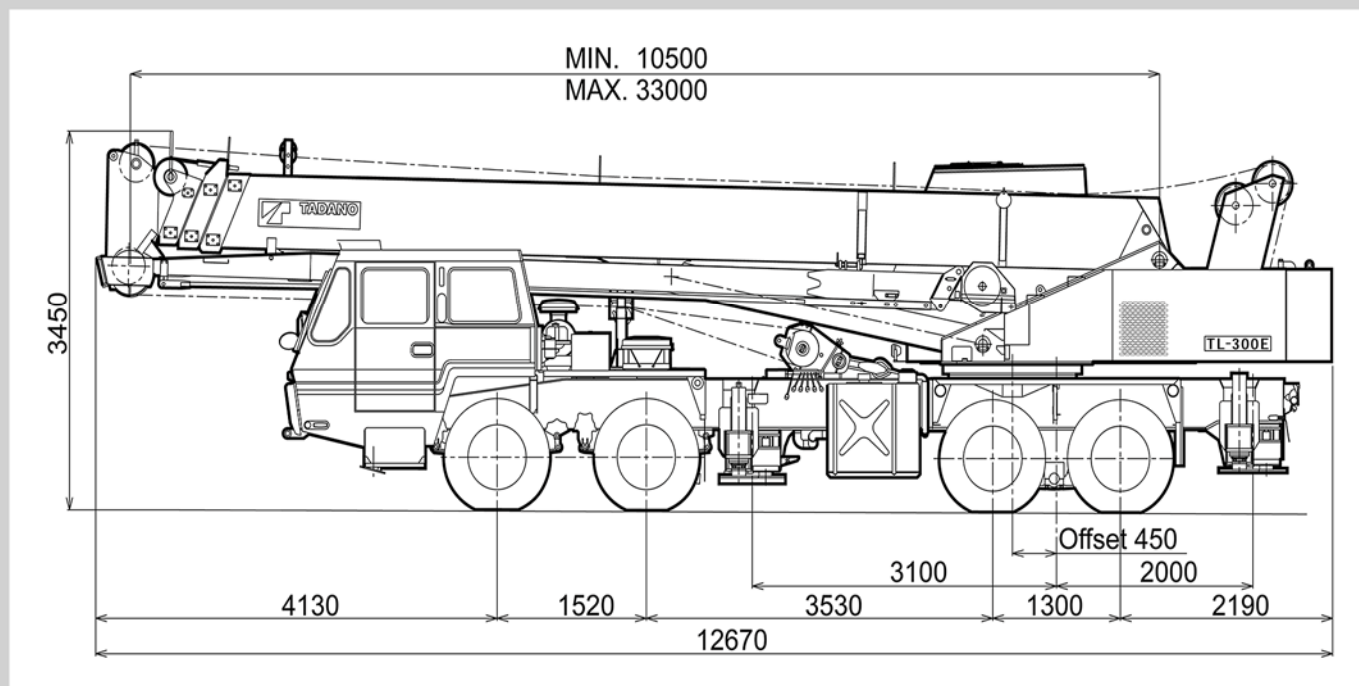


TL-300E DIMENSIONS

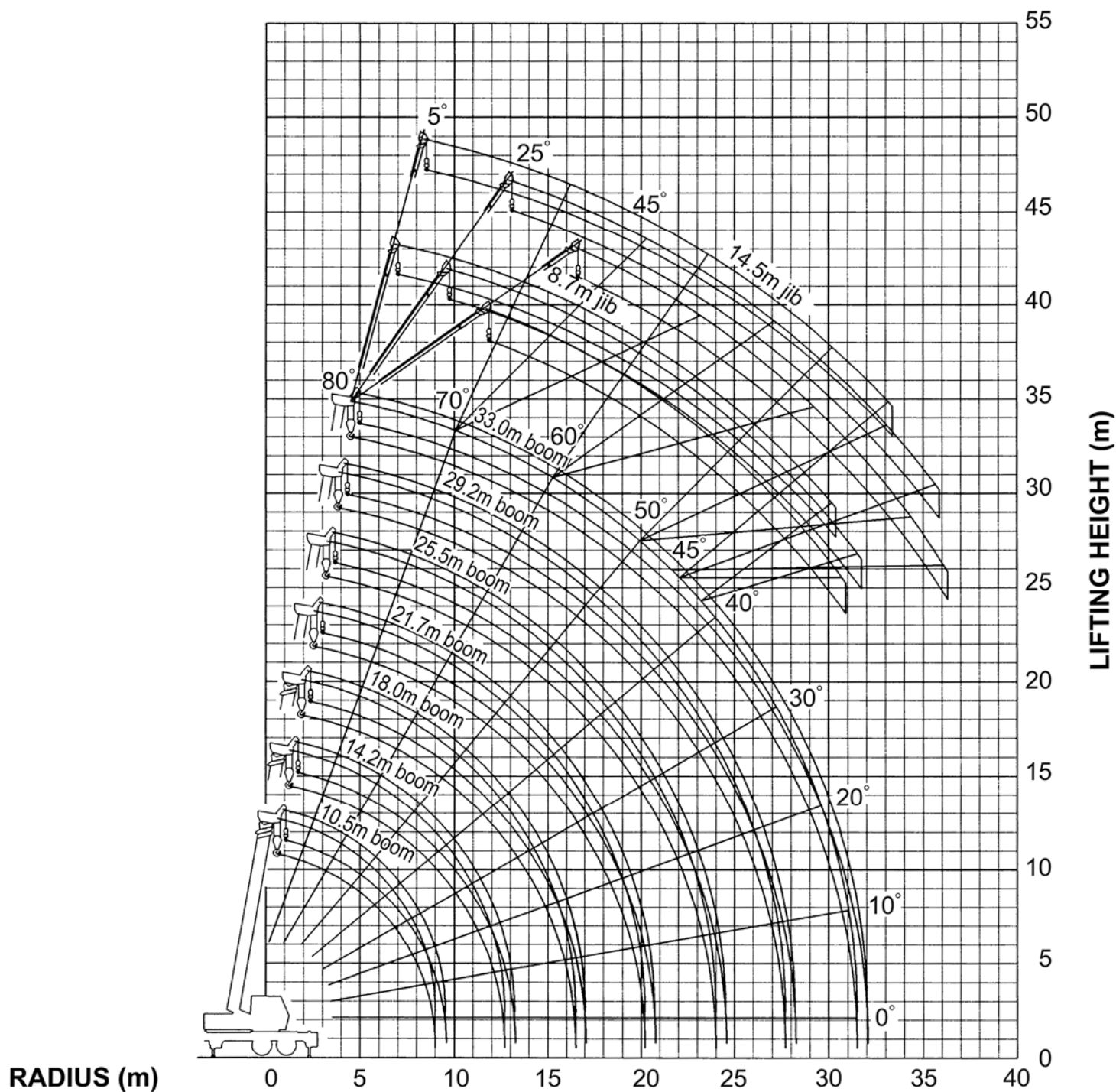


Overall Width	= 2,490 mm
Tail Swing Radius	= 3,350 mm
Tread (Track) - Front	= 2,050 mm
Tread (Track) - Rear	= 1,860 mm

DIMENSIONS

TL-300E TADANO

RANGE DIAGRAM - ALL LIFT CONFIGURATIONS



WORKING RANGES

TL-300E TADANO

MAIN BOOM

Outriggers fully extended 6.1m							
Front jack extended (360°)							
Front jack not extended (Over sides and rear)							
B \ A	10.5	14.2	18.0	21.7	25.5	29.2	33.0
3.0	30,000	20,000	16,000				
3.5	25,400	20,000	16,000	12,000			
4.0	22,900	20,000	16,000	12,000	11,500		
4.5	21,000	20,000	16,000	12,000	11,500		
5.0	19,400	18,400	16,000	12,000	11,500	9,000	
5.5	17,700	16,800	14,750	12,000	11,500	9,000	7,000
6.0	16,200	15,300	13,700	12,000	11,500	9,000	7,000
7.0	13,700	12,650	11,950	11,000	10,000	9,000	7,000
8.0	11,400	11,000	10,550	10,200	8,900	8,200	7,000
9.0		9,000	9,000	9,200	8,050	7,450	6,250
10.0		7,300	7,300	7,700	7,300	6,750	5,700
12.0		5,050	5,050	5,450	5,700	5,650	4,800
14.0			3,600	4,000	4,250	4,400	4,100
16.0			2,550	2,950	3,200	3,400	3,450
18.0				2,200	2,450	2,650	2,800
20.0				1,550	1,850	2,050	2,200
22.0					1,350	1,550	1,750
24.0						1,200	1,350
26.0						850	1,000
28.0							700
30.0							500

Unit : kg

A: Boom Length (m) | B: Load Radius (m)

LOAD CHART

TL-300E TADANO